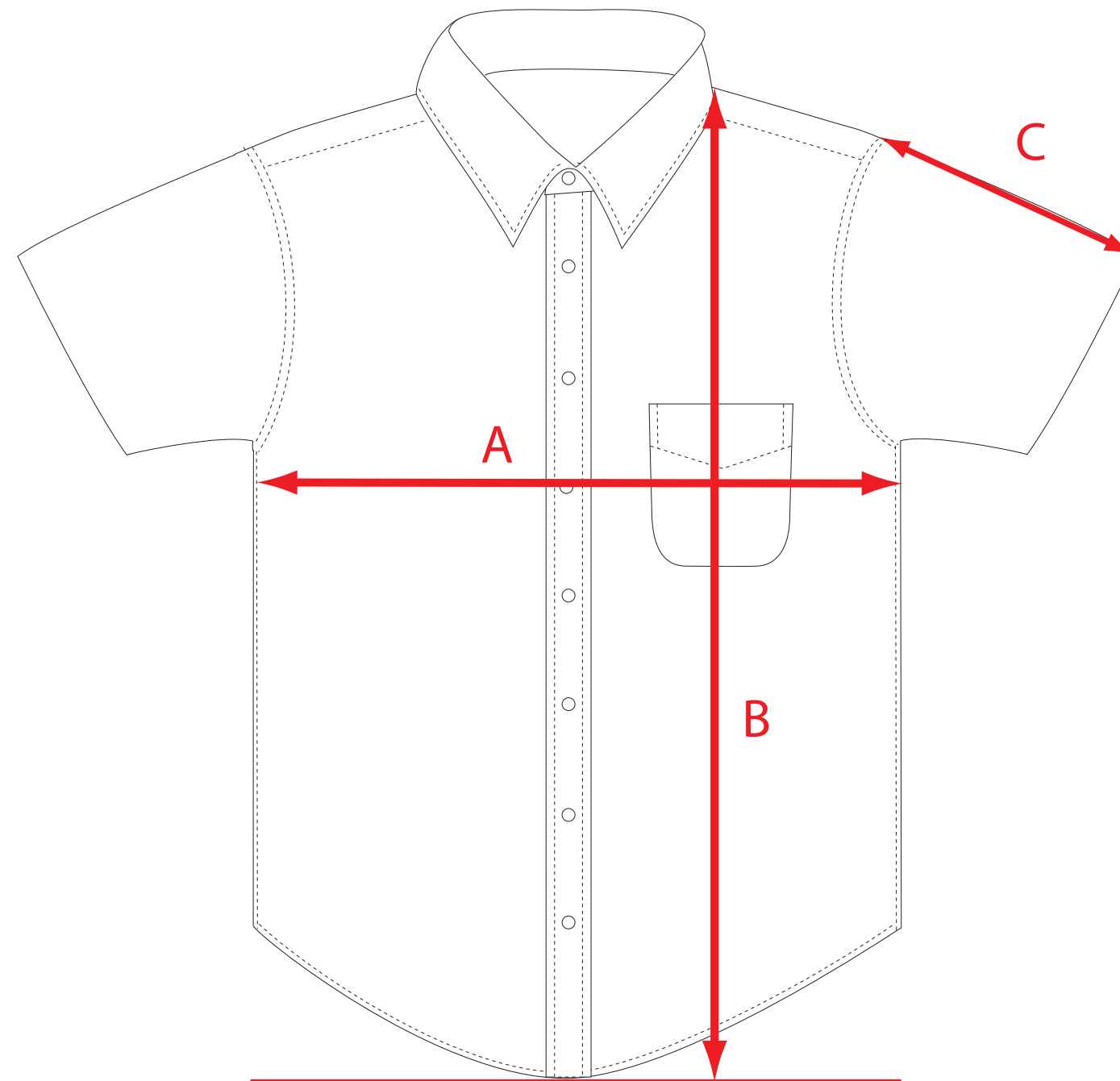


# St.Louis Tailor Fit Short



	A	B	C
S	51 cm	75,5 cm	24,5 cm
M	56 cm	78 cm	25 cm
L	61 cm	80,5 cm	25,5 cm
XL	66 cm	83 cm	26 cm
XXL	71 cm	85,5 cm	26,5 cm
XXXL	76 cm	88 cm	27 cm